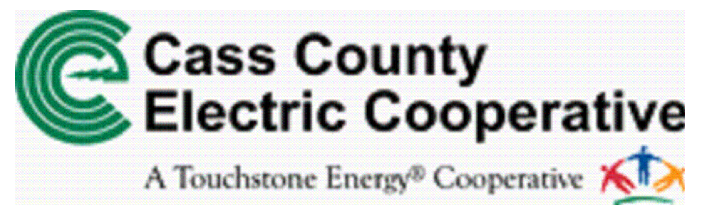


TRANSFORMER PAD FARGO, ND

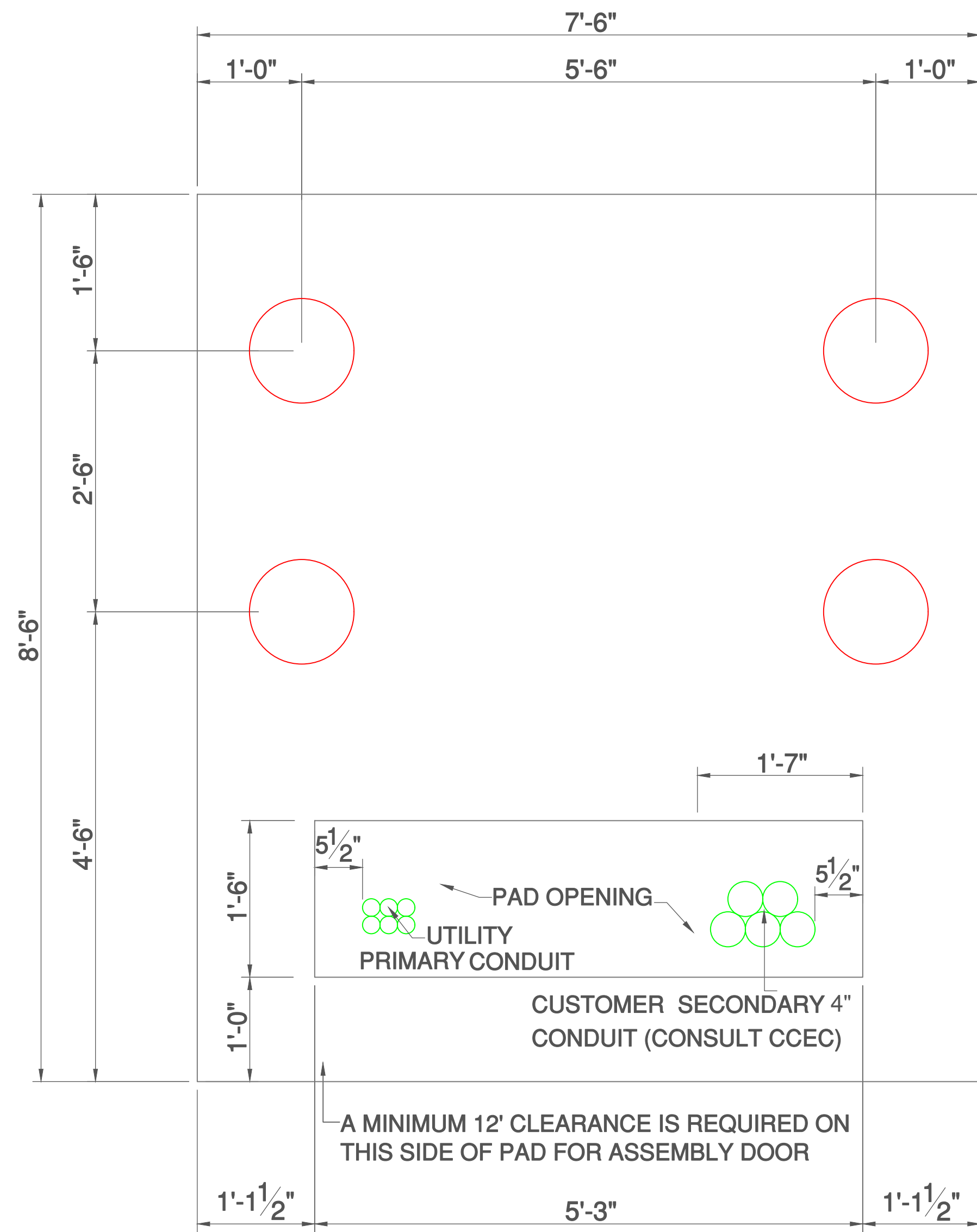
REV.	DATE	DESCRIPTION	BY
0	02/06/2025		TK



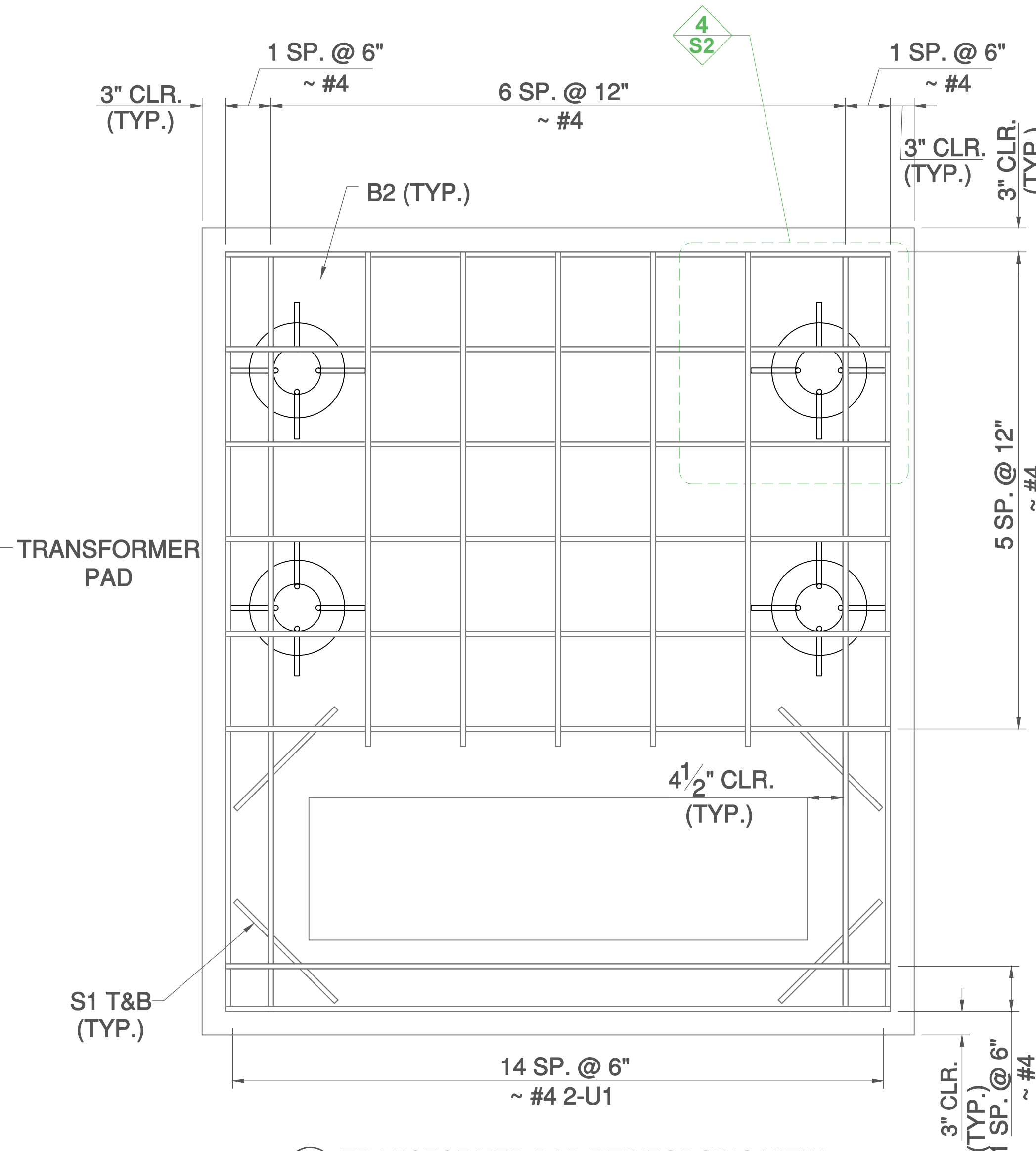
CASS COUNTY ELECTRIC COOPERATIVE
FARGO, ND

NOTES:

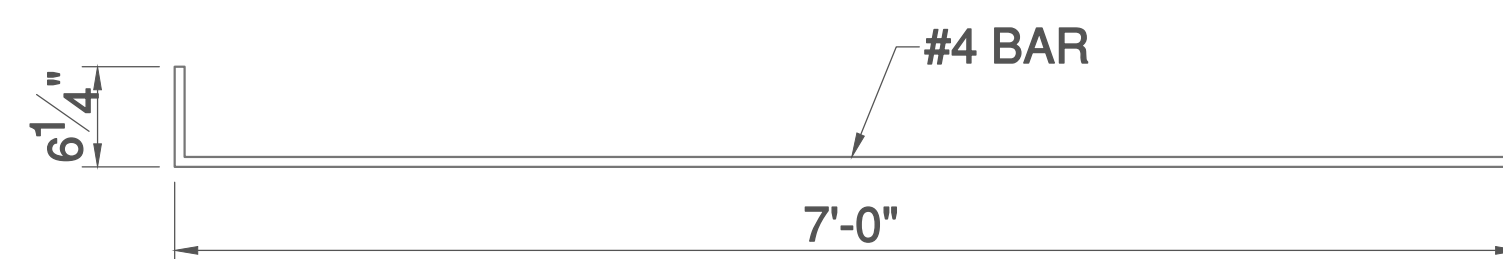
1. FOOTINGS ARE REQUIRED 5' DEPTH FOR FORM TUBES. FOOTING MUST BE TIED INTO REBAR.
2. MINIMUM SPACE BETWEEN BUILDING AND TRANSFORMER 3FT IF BUILDING HAS 2HR RATED FIREWALL.
3. MAINTAIN CUSTOMER CONDUITS WITHIN 19" OF END OF PAD OPENING.
4. CONSULT CCEC FOR CONDUIT SIZE AND NUMBERS.
5. ALL EXPOSED CONCRETE EDGES TO HAVE 3/4" CHAMFER.
6. TRANSFORMER PAD CONCRETE COMPRESSIVE STRENGTH TO BE 4,500 PSI OR GREATER. STEEL REINFORCEMENT TO BE 60,000 PSI YIELD STRENGTH GRADE 60 STEEL.
7. ASSUMED SERVICE LEVEL SOIL BEARING PRESSURE OF 1500 PSF
8. REBAR SUPPLIER TO PROVIDE CHAIRS AS REQ'D FOR TOP MAT SUPPORT.
9. BOTTOM GRADE OF PAD SHOULD BE LEVEL WITH SURROUNDING SURFACE.



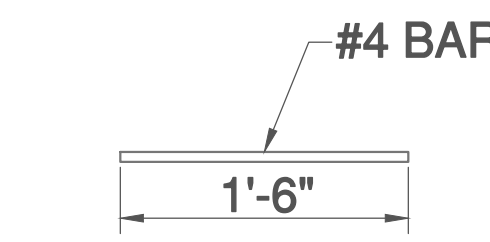
1 S2 TRANSFORMER PAD PLAN VIEW



2 S2 TRANSFORMER PAD REINFORCING VIEW



B2 BAR DETAIL



S1 BAR DETAIL

ISSUED FOR
CONSTRUCTION

DESIGN BY: TK
DRAWN BY: NWL
APPROVED BY:

THREE PHASE
TRANSFORMER CONCRETE
PAD ASSEMBLY S1
(45-2000 KVA)

DRAWING NUMBER:
FD3-001_CCEC

REVISION:
0